



WEATHERGEEK PRO V 1.0

ANDROID USER'S GUIDE



WEATHERGEEK PRO V 1.0

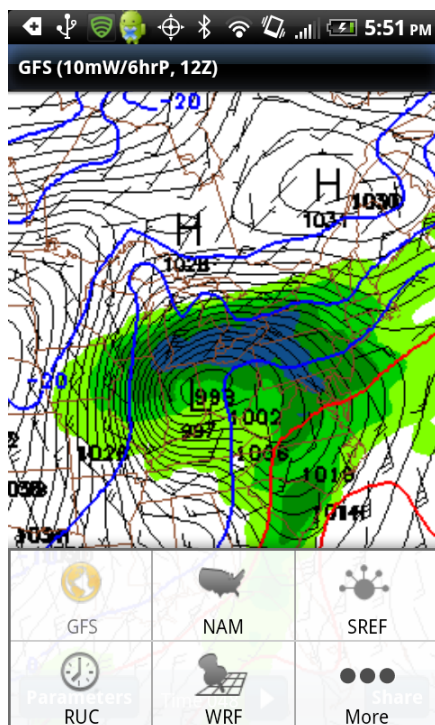
ANDROID USER'S GUIDE

INTRODUCTION

This isn't your daddy's weather app! If you're looking for an app to give you the forecast, look elsewhere. But if you're a hardcore weather geek who likes to dive into the data, this is the app you've been dreaming of! WeatherGeek Pro is an application made for WeatherGeeks by WeatherGeeks! For the first time ever, view numerical model data on a mobile app! Best of all, you have the ability to share this information with a tap of your finger.

GETTING STARTED

When you first start the app, a splash screen will show. The app will then display the default model (GFS), the default level (10mW/6hrP) and the default runtime (00Z).



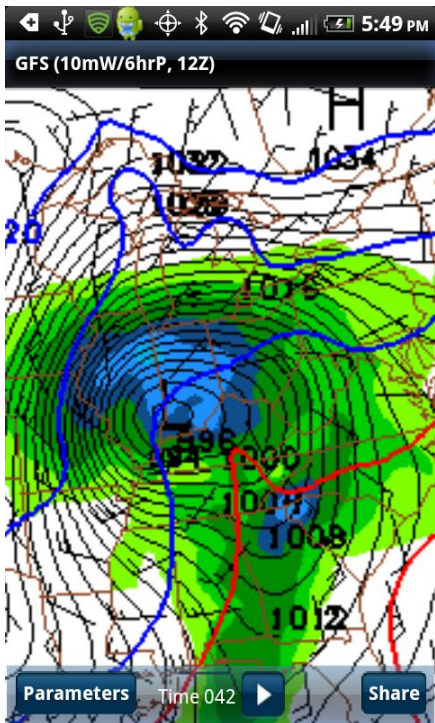
TO VIEW MODEL IMAGES

Changing Models

Simply tap your Android device's **Menu** button to bring up the **Model Menu**. Choose between the GFS, NAM, SREF, WRF and RUC models. Tap **More** to bring up another menu where you can select MOS tables. When you select a model, the default level and runtime images will begin to load.

IMAGE SHARING MADE EASY!

When you come across an image you would like to share, simply tap the "Share" button. A list of ways you can share the image will open (Twitter, Facebook, Gmail, Text Message, etc.). Select the method you would like to use and the image or a link to it will be transferred to that app.



TO CHANGE PARAMETERS

Menu Bar

The **Menu Bar** will always be at the bottom of the image. Tap on the **Parameters** button on the **Menu Bar**. This will bring up a menu which allows you to select the **Level** and model run time. On the left you can select the desired **Level** (dataset). On the right you select your desired model **Runtime**. When you have the selections you desire, hit your Android device's **Back** button. The first image will load. *Note: In the middle of the **Menu Bar**, the image time will also be displayed.*

CYCLING THROUGH IMAGES AND CHANGING LEVELS

Swipe Gesture

The swipe gesture can be used to cycle through individual model images one at a time and to also

change the *level* you are viewing. **Swipe** your finger right to left on an image to advance an image forward one time period. **Swipe** your finger left to right on an image to go backwards one time period. You can also **swipe** your finger from the top to the bottom of the image to advance up one **Level** and **swipe** from bottom to top of the image to go down one **Level**. *Note: For the swipe gesture to work properly, images must be zoomed out all the way.*

Play/Stop Button

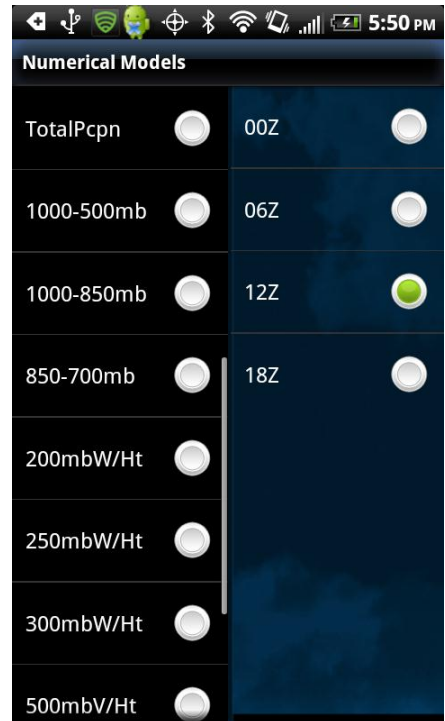
The **Play** button can be used to animate images from the initial time period through the final time period. Hit the **Play** button to begin the animation. The images will continue to animate infinitely in a loop. Hit the **Stop** button to stop the animation.

ZOOMING AND PANNING IMAGES

Spread your finger and thumb outward on an image in order to zoom in on that image. Push your finger



in thumb together on the image in a **Pinching** motion in order to zoom out on an image. Images can be zoomed while the image is in animation mode and will hold the zoom during the animation. To **pan** a zoomed image, touch the image and move your finger. *Note: While the image is zoomed, the **Swipe** gesture may not properly work to cycle images. To use the swipe gesture properly, it is necessary to zoom the image all the way out to its native size and then begin to utilize the swipe*

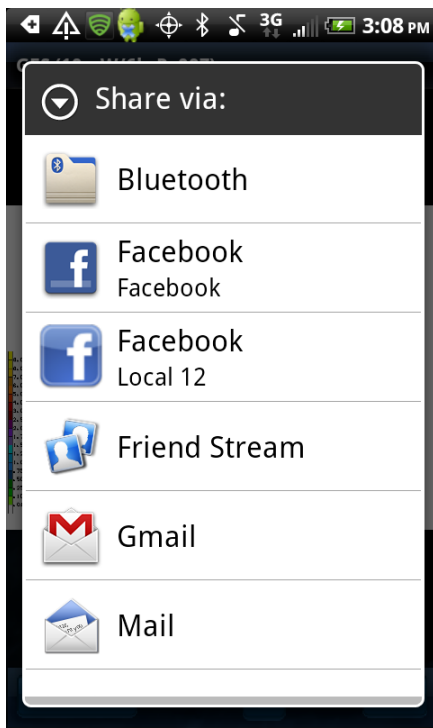


gesture.

VIEWING IMAGES IN LANDSCAPE MODE

Simply **Rotate** your Android device horizontally and the image and menus will reorient into landscape mode. Message indicating "Config changed" will also appear briefly. Zooming and image animation will also work when the image is in this mode. To return to portrait mode, simply reorient your Android device in the vertical and the image will reorient itself. *Note: zooms will not hold when switching from portrait mode to landscape mode or vice versa. Use care when viewing images which are zoomed in. Any change in the viewing angle of your device can result in the image returning to its original size and the zoom being cancelled.*

SHARING MODEL IMAGES



To Share an Image

On the **Menu Bar**, tap the **Share** button. A list of methods you can choose to share the image will appear (Twitter, Facebook, Gmail, Text Message, etc.). Choose which method you would like to use. The image or a link to it will be automatically transferred to your selected sharing app and that app will open.

TO VIEW MOS (MODEL OUTPUT STATISTICS) DATA

Tap your Android device's **Menu** button to bring up the **Model Menu**. Tap the **More** button on the **Model Menu**.

Tap on the **MOS** button in the

menu which pops up. On the top, either type the city you wish to view data for or the 4-letter ID of the station. If WeatherGeek Pro finds your location, the city/place name will appear in the drop down menu. Tap on that name and MOS data tables will be displayed for the GFS, NAM and GFSX models. The last location you entered will be the default location the next time **MOS** is selected.

INFO MENU

Tap your Android device's **Menu** button to bring up the **Model**

KIND INDIANAPOLIS

MOS FORECASTS

GFS MOS (MAY)

KIND	GFS MOS GUIDANCE		1/31/2011 1800 UTC																		
DT	/FEB	1	/FEB 2																		
HR	00	03	06	09	12	15	18	21	00	03	06	09	12	15	18	21	00	03	06	12	18
M/X			23			30			21			26									
TMP	27	28	29	28	26	23	25	27	28	30	29	27	25	21	23	23	19	15	11	6	13
DPT	20	22	24	22	21	24	26	27	28	27	25	22	19	18	16	14	11	8	2	3	
CLD	0V	0V	0V	0V	0V	0V	0V	0V	0V	0V	0V	0V	0V	0V	0V	0V	0V	0V	0V	0V	0V
WDR	07	07	06	03	04	05	05	06	06	08	17	22	26	29	29	28	29	29	26	24	
WSP	10	08	06	07	10	13	13	16	25	17	14	16	19	24	21	16	15	12	06	09	
P06			100		79		69		95		100		61		23		22		11		6
P12			2		100				4		5		100		0		28		11		
Q06			2		1		1		3		5		1		0		0		0		0
Q12			2		2				4		5		2		0		0		0		0
T06		2/	0	1/	0	0/	0/	1/	1	12/	0	1/	0	0/	0	1/	3	0/	0	0/	5
T12			1/	1/				12/	3		1/	5		1/	5		1/	7	0/	0/	5
POE	26	33	36	34	36	35	30	31	35	34	30	32	11	2	3	3	2	2	3	3	
POS	54	51	47	50	51	50	53	48	34	22	69	89	98	97	97	95	96	96	96	94	
TYP	Z	Z	Z	Z	Z	Z	Z	Z	Z	Z	Z	R	S	S	S	S	S	S	S	S	
SNW																					
CI6	4	3	3	3	3	2	3	1	3	3	3	4	3	4	4	4	4	4	4	8	8
VIS	6	4	3	3	4	4	3	2	1	3	5	7	7	5	5	7	7	7	7	7	7
OBV	N	BR	BR	BR	BR	BR	BR	BR	BR	FG	BR	BR	N	N	N	N	N	N	N	N	N

NAM MOS (MET)

KIND	NAM MOS GUIDANCE		1/31/2011 1200 UTC																		
DT	/JAN	31/FEB	/FEB 2																		
HR	18	21	00	03	06	09	12	15	18	21	00	03	06	09	12	15	18	21	00	06	12
M/X			18			27			19			19			23	24	22	19	16		
TMP	25	29	28	27	23	21	20	20	23	26	25	24	22	21	21	23	24	22	19	16	
DPT	18	22	23	22	20	18	16	15	19	22	22	20	19	18	17	17	18	17	14	11	
CLD	0V	0V	0V	0V	0V	0V	0V	0V	0V	0V	0V	0V	0V	0V	0V	0V	0V	0V	0V	0V	
WDR	08	08	07	07	06	03	04	04	05	05	05	05	05	02	33	31	31	32	30	29	
WSP	11	09	10	08	07	09	12	13	15	17	24	22	20	14	11	17	17	12	09	07	
P06			39		85		83		35		82		73		71		66		17		0
P12			2		9		89		87		2		83		3		72		10		0
Q06			1		2		1		1		2		3		1		1		0		0
Q12			2		2		2		2		2		3		2		2		0		0
T06		1/	4	2/	1/	1/	0/	0/	5/	0	4/	6	1/	2	0/	0/	0/	0/	0/	0/	
T12			2/	4			1/	0		5/	7		6		1/	2		0/	0/		
SNW																					
CI6	5	3	3	3	2	2	3	1	3	3	3	4	3	2	3	3	4	5	5	5	5
VIS	7	5	4	4	5	4	4	4	3	5	7	6	5	4	5	6	7	7	7	7	7
OBV	N	BR	BR	BR	BR	BR	BR	BR	BR	BR	BR	BR	N	N	N	N	N	N	N	N	N

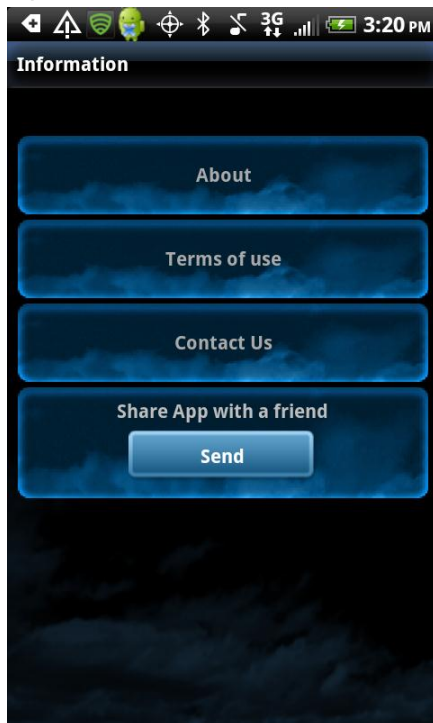
GFSX NOS (MET)

KIND	GFSX NOS GUIDANCE		1/31/2011 1200 UTC																		
DT	/JAN	31/FEB	/FEB 2																		
HR	24	36	48	60	72	84	96	108	120	132	144	156	168	180	192						
M/X	22	28	21	26	6	14	6	28	16	33	21	38	27	37	20	20	38				
TMP	25	27	25	20	7	11	8	25	18	29	23	34	29	32	22						
DPT	23	25	21	15	4	3	2	11	13	18	18	25	24	24	17						
WDR	11	22	26	23	16	9	8	10	8	10	9	11	11	14	14						
P12	96	99	92	87	14	7	2	8	16	8	15	10	28	44	21	27					
P24	100		97	14	1			8	26	1	22		22	44							
Q12	2	4	1	0				0	1	0	0	0	0	1							
Q24	4	1	0	1	0			0	1	0	0	0	1	1							

Menu. Tap **More** and then **Info** on the menu which pops up.

About

Tap the **About** button to view the Splash Screen.



Terms of Use

Tap on the **Terms of Use** button to view our terms of use for WeatherGeek Pro.

Contact

Tap on the **Contact** button to send us an email.

Share This App with a friend

Tap on **Send**. A list will pop up allowing you to select the method you would like to use to share our app. After selecting a method, an automated message will be created directing your friend to our website www.weathergeekpro.com.